

SCALE: 1" = 300'

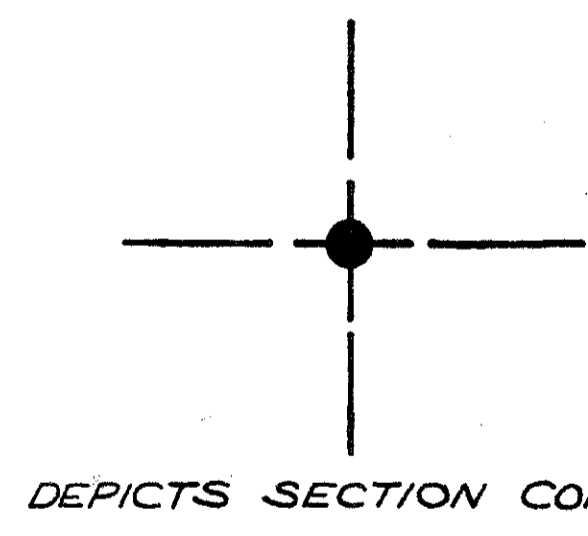
THIS IS NOT A RECORDED PLAT.

WEST 1/2 OF SECTION 20, TOWNSHIP 42 SOUTH, RANGE 41 EAST, PALM BEACH COUNTY, FLORIDA. PREPARED FROM A BOUNDARY SURVEY BY GEORGE R. BROCKWAY, WEST PALM BEACH, FLORIDA. REGISTERED LAND SURVEYOR, FLORIDA CERTIFICATE NO. 831.

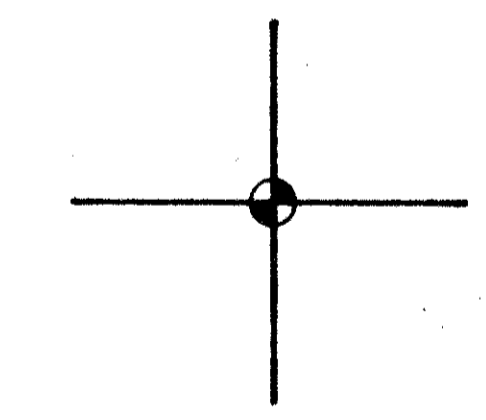
ALL TRACT DESCRIPTIONS ARE AS MEASURED PARALLEL TO THE SOUTH AND WEST SECTION LINES.

LEGEND

- DEPICTS TRACT LIMITS
- DEPICTS ROAD & DRAINAGE EASEMENTS
- (•••) DEPICTS POWER POLES AND ANCHORS



DEPICTS SECTION CORNER

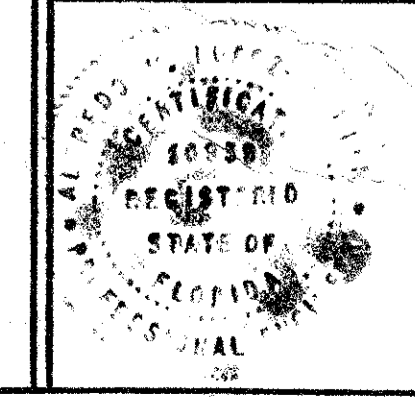


DEPICTS 1/4 SECTION CORNER

ur0368.igr
ROYAL PALM BEACH 41-42-20 WEST 1/2

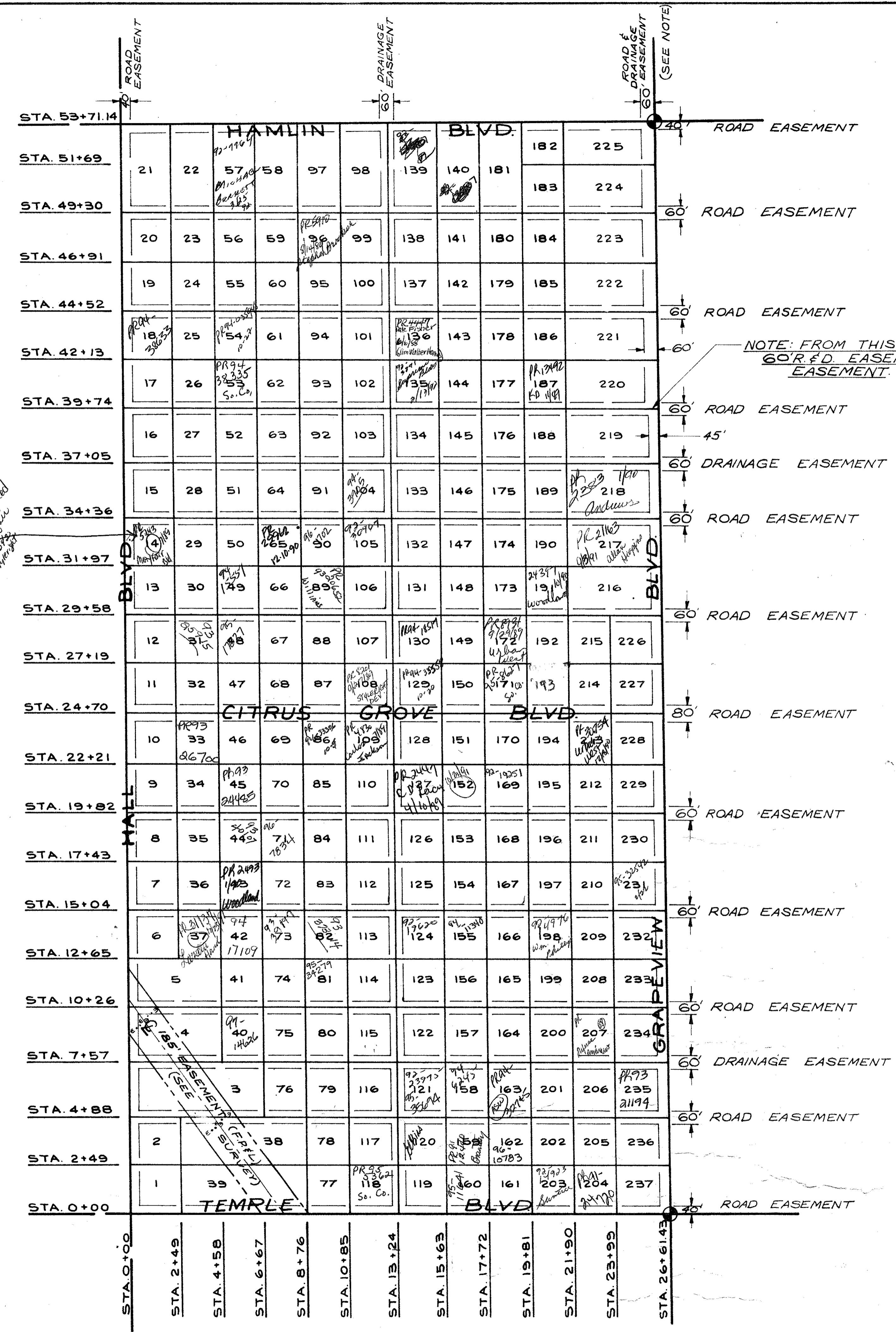
WEST 1/2 SECTION 20, T.42S., R.41E.,
PALM BEACH COUNTY, FLORIDA.

PLOT PLAN FOR ROYAL PALM BEACH COLONY, INC.



WOOD, BEARD, AND ASSOCIATES, INC.
CONSULTING ENGINEERS
FORT PIERCE, FLORIDA

DESIGNED BY A.L.A.	CHECKED BY A.W.	DWG. NO. 7013
SCALE 1" = 300'	DATE 4-70	SHEET 1 OF 9



Lot 14
Typical segment
see plat
page 12-13-14